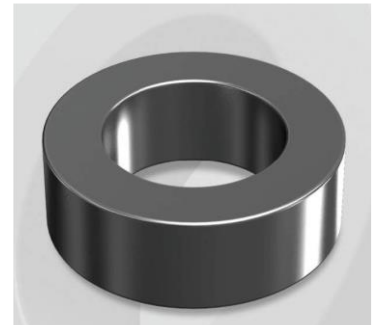


CS330060G18

Electrical Characteristics

Material	Permeability (μ)	AL \pm 8% (nH/N ²)	DCB (% min) @ 50 Oe	Coreloss (mW/cm ² , max) @ 50kHz, 1000G
SENDUST	60	103	64.4	320

OD : 330



Core Dimensions

Dimensions		Uncoated		Coated		Color	Packaging
		(mm)	(inch)	(mm)	(inch)		
OD	(Max)	33.02	1.300	33.83	1.332	Black	Box Qty = 140 pcs
ID	(min)	19.94	0.785	19.30	0.760		
HT	(max)	18.00	0.709	19.00	0.748		

Physical Characteristics

Cross Section (A)	Path Length (ℓ)	Window Area (Wa)	Volume (V)	Breakdown Voltage (Vac)
1.133 cm ²	8.15 cm	2.93 cm ²	9.233 cm ³	1,000
0.176 in ²	3.209 in	578,251 cmil	0.5634 in ³	

Winding Information

0% Winding length/turn (cm)		
5.253		
40% winding factor Surface Area (cm ²)		
60.93		
40% Wound Di.(mm)		
OD	ID	HT
38.69	12.64	24.76

Typical DC Bias Performance

